

**ATMO 489: Radar Meteorology
Fall 2006
Team Project Case Selection**

OPTION #1:

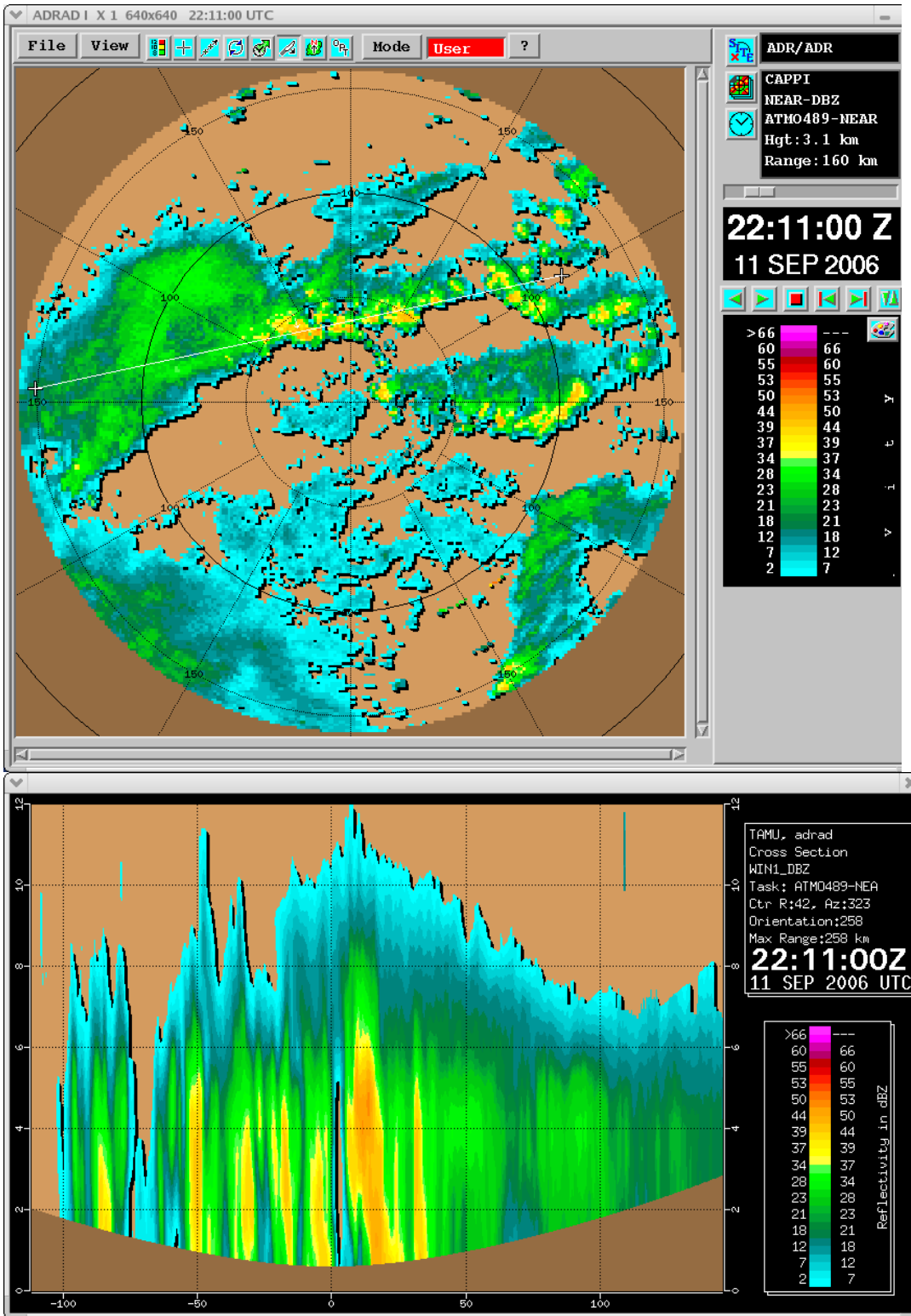
ADRAD (Aggie Doppler radar) cases from fall semester 2006 that are available on ADRAD LINUX PC in radar room for viewing with SIGMET SIRIS software.

<i>Case Day</i>	<i>Time Range (UTC)</i>	<i>Brief Description</i>
1. September 11, 2006	11/1941 – 12/0011	Linear multicell systems
2. September 17-18, 2006	17/2100 – 18/1400	Widespread precipitation associated with nocturnal mesoscale convective system (MCS)
3. October 10, 2006	10/1622 – 10/1930	Small MCS/squall line and null severe case (tornado warning over Brazos but no severe).
4. October 12, 2006	12/1930 – 12/2352	Multicell convection, loosely organized into a broken line.
5. October 16, 2006	16/1540 – 16/2040	Widely scattered precipitation; multiple squall lines.

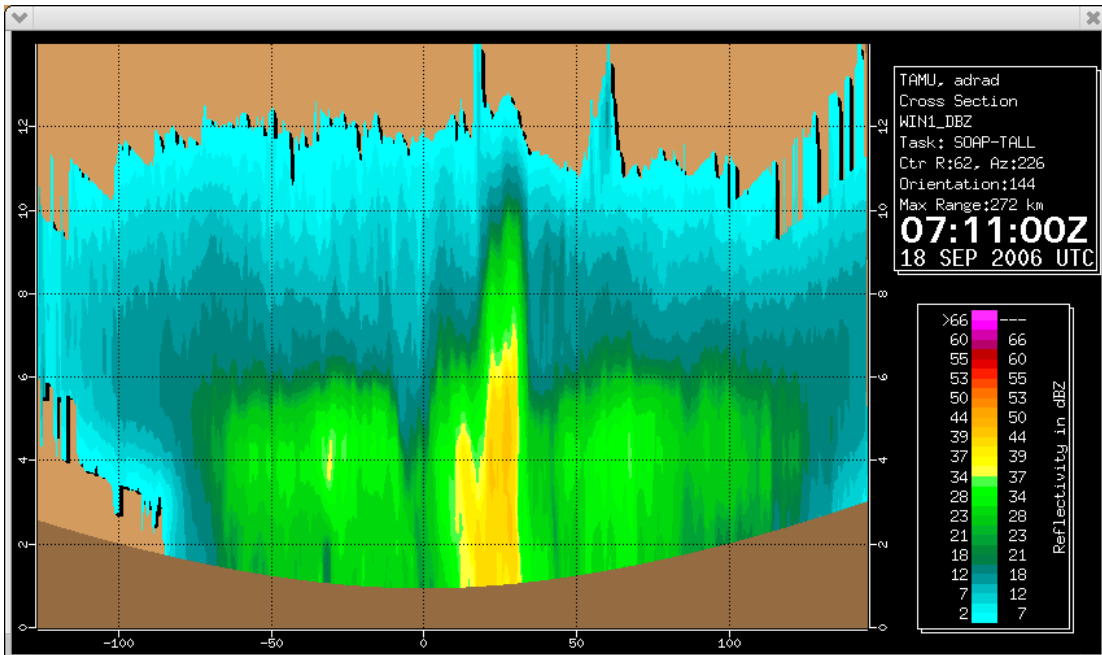
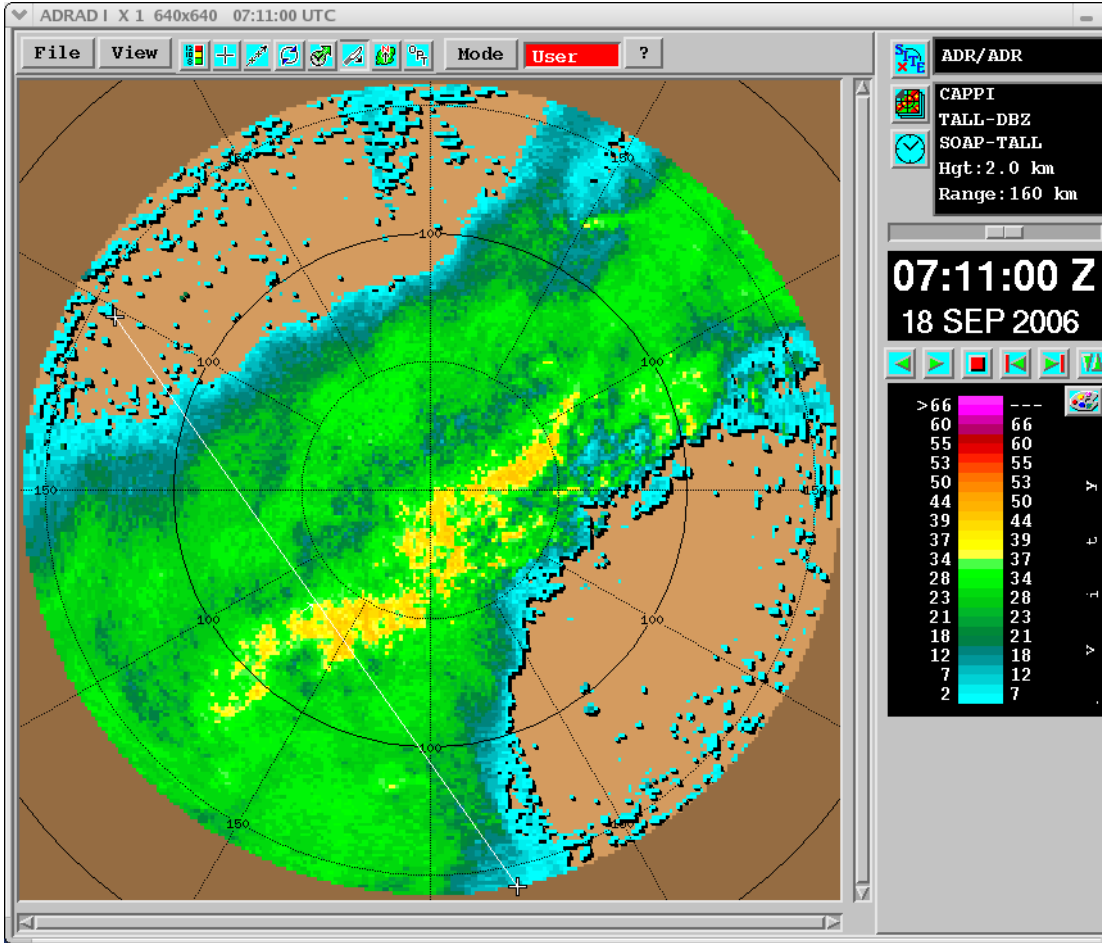
Analysis of these case studies will be accomplished in the radar room on the ADRAD LINUX PC using SIGMET SIRIS software (same as used in the earlier radar labs). Students (teams) who helped collect the ADRAD data will have priority for selection of the ADRAD case. There will be a sign up sheet for use of the ADRAD PC on the radar room door. Sign up for 1 hour blocks (3 in a row maximum) and then e-mail kayceef@tamu.edu and larry_carey@tamu.edu with your request. We have the key and will let you in the radar room. To be sure of room availability, you should sign up for time blocks well in advance.

Sample Imagery for ADRAD cases:

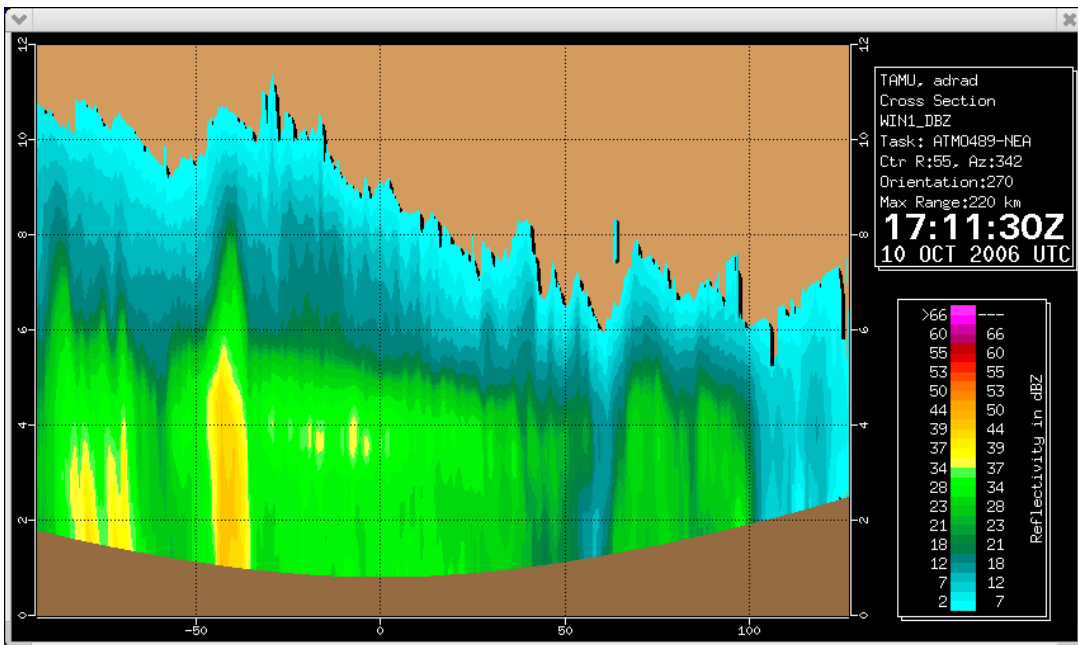
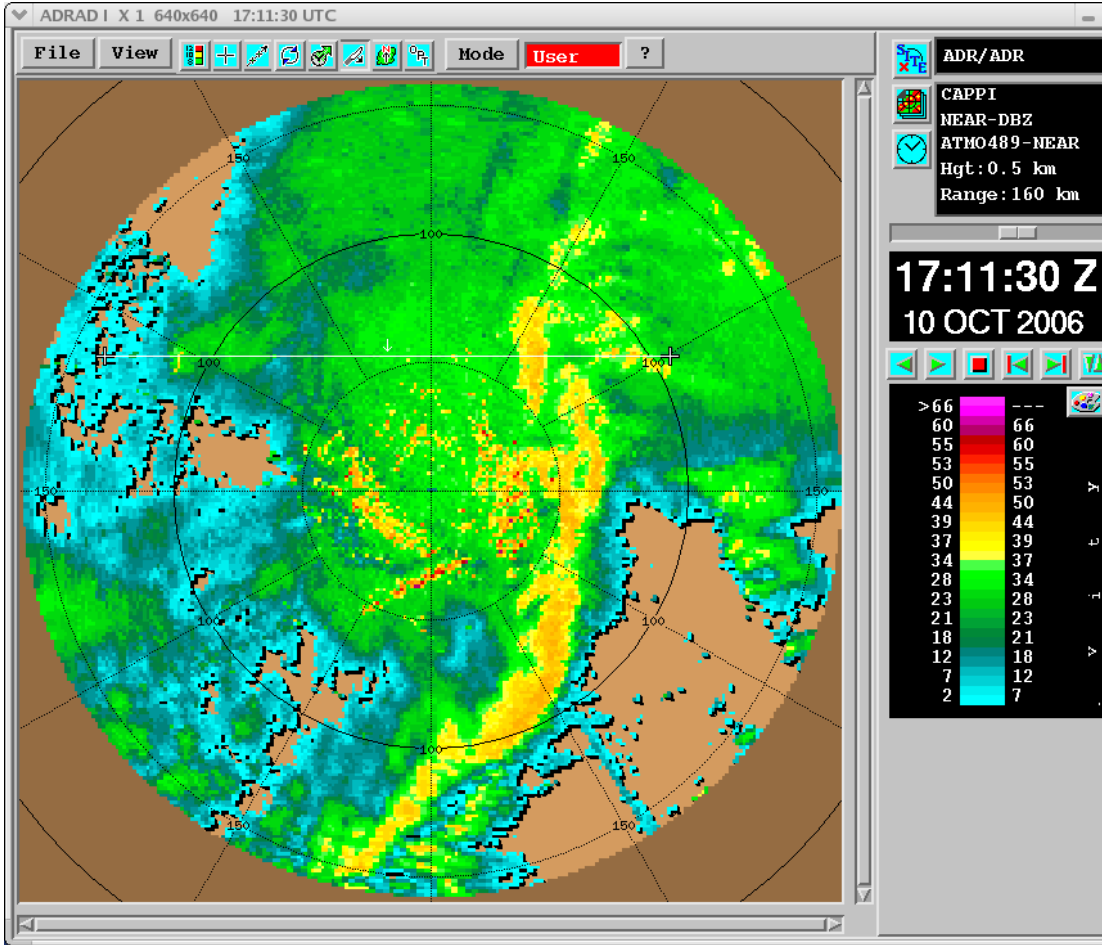
Case 1: Sept 11



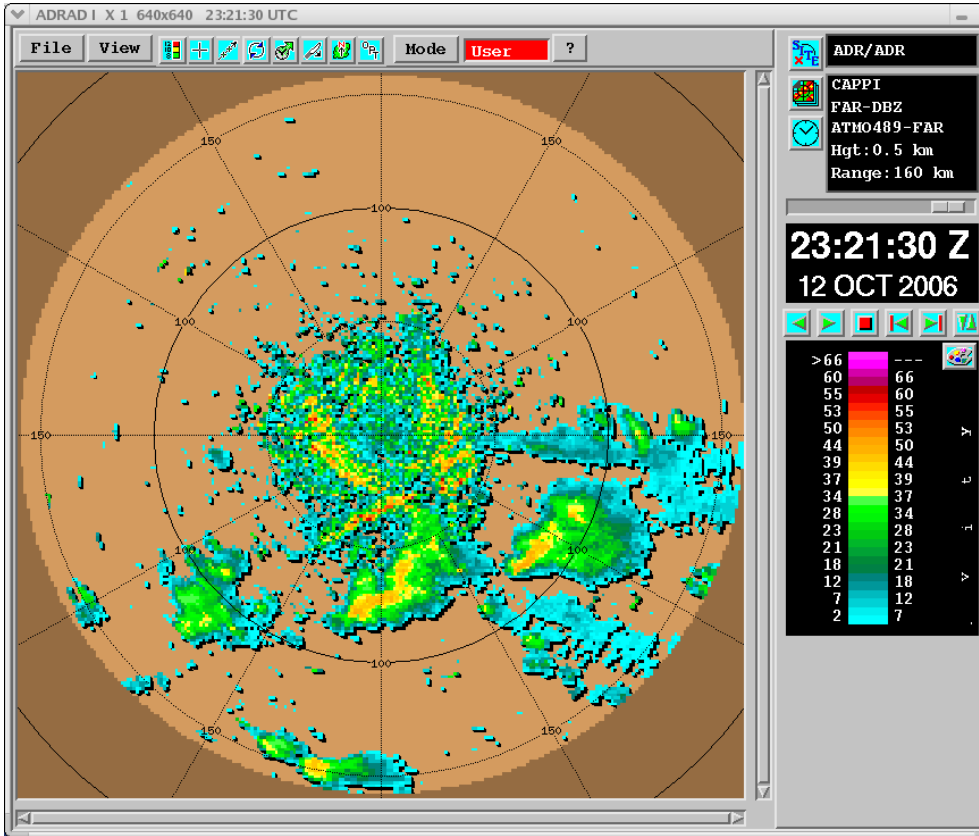
Case 2: Sept 17-18



Case 3: Oct 10



Case 4: Oct 12



OPTION #2:

Various high-impact weather case studies that occurred between 1994 and 2002 are available for viewing and analysis with GARP on the LINUX PCs in the 12th floor lab. Data viewing with GARP is same as in ATMO 352. The UCAR COMET data sets, which include WSR-88D (Weather Surveillance Radar – 1988 Doppler) data and are available for download, are described here:

<http://www.comet.ucar.edu/resources/cases/>

You are free to select case studies from the severe weather, floods, hurricanes, or winter weather categories. However, the case you select **MUST** have data from at least one individual WSR-88D site (e.g., NIDS) for analysis. You cannot pick a case that has low-level composite radar imagery only. (NOTE: Several cases have composite imagery only and no NIDS!) Lastly, please do not select a case that we covered in detail during ATMO 352 (e.g., Spencer 1998 tornado, OKC 1999 tornado).

The available data for download via ftp is described in detail via links at the web site above. Once you decide on a case, you will need our help downloading the data with ftp, placing it in the proper directory, and making a macro command for viewing with garp. Depending on student demand, this process could take 1-3 days.